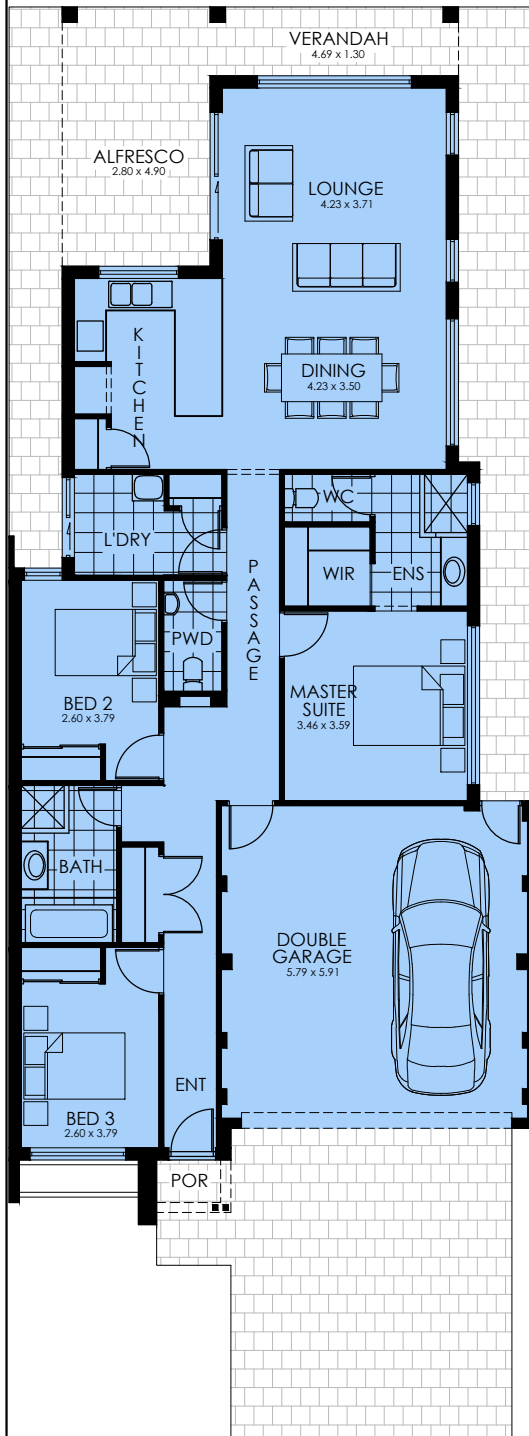


- AREAS -

FLOOR	-	126.27 m ²
CARPORT	-	36.95 m ²
ALFRESCO	-	13.72 m ²
V'DAH	-	6.10 m ²
PORCH	-	1.40 m ²
TOTAL	-	184.44 m ²



House & Land from **\$ 329,500**

MEMPHIS

Base price includes

- Site works
- Stormwater
- Shire fees
- 28c Gyprock lined ceilings to living
- 28c high Garage ceiling
- Tiling to wet areas and Kitchen
- Paving as per plan (including crossover)
- Built in robes
- Cabinet work.
- Sectional garage door
- Gas hot water system

Full turn key \$ 355,500 price includes

- Floor coverings
- Window treatments
- Light fittings
- Wall split reverse cycle a/c
- Internal wall painting
- Landscaping front/rear
- Boundary fencing

Contact

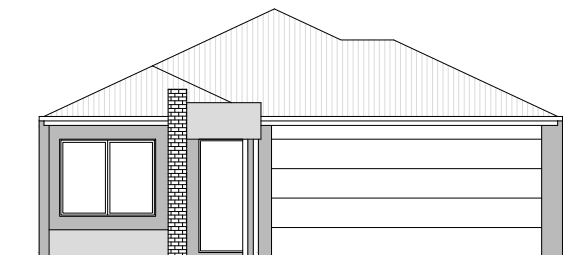
Byron Lathwell

Mob: 0411 690 969

Office: 9581 2433

Fax: 9581 2488

Email: byronla@optusnet.com.au



DESIGNED FOR LOTS 9, 13 & 15 BORTOLO DRIVE, MANDURAH STAGE 1A