

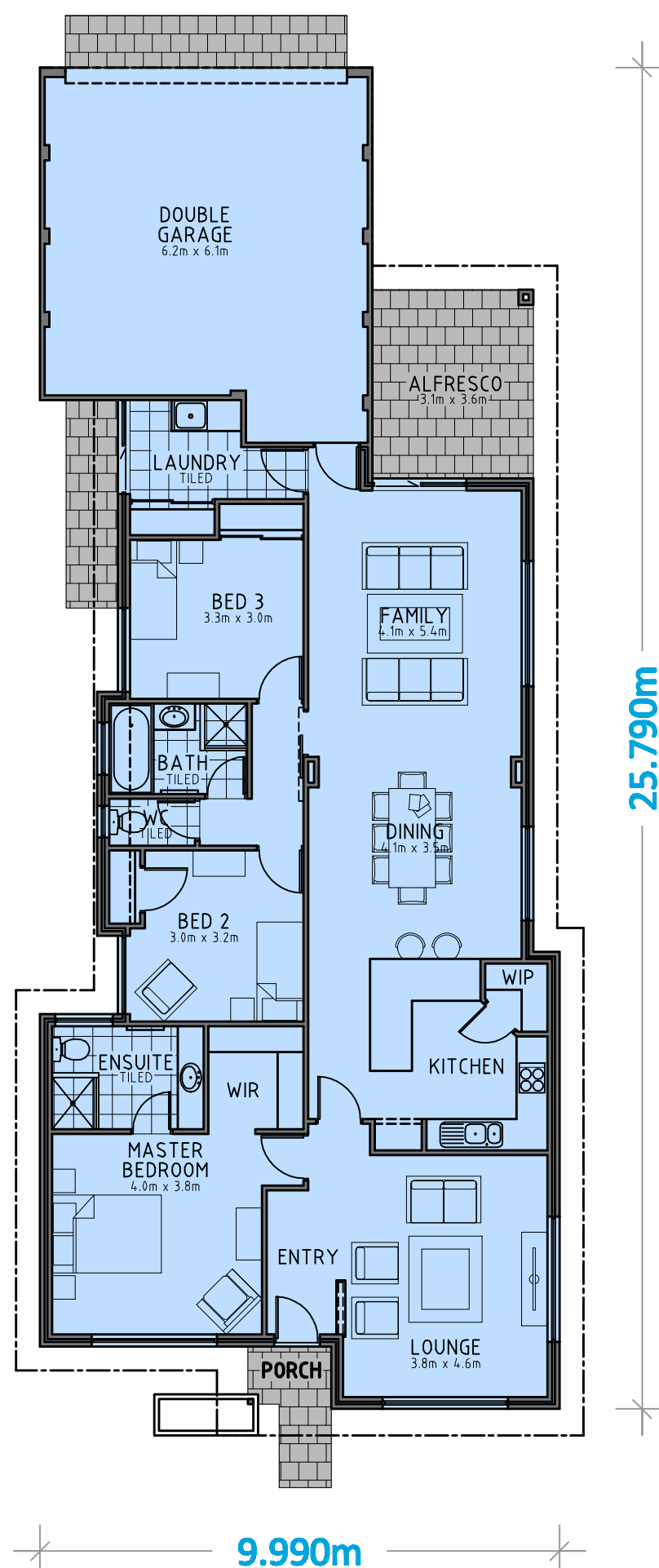
# Point Bouvard Homes.

**The Brumby** | total area 240m<sup>2</sup> / living area 159m<sup>2</sup>



3	2	2

## COTTAGE LOT PLAN



Mobile: Byron Lathwell 0411 690 969  
Ph: 9581 2433  
Fax: 9581 2488  
Email: [byronla@optusnet.com.au](mailto:byronla@optusnet.com.au)

ALL DRAWING, PLANS AND DESIGNS ARE SUBJECT TO COPYRIGHT AND ANY ATTEMPT OR ACTUAL INFRINGEMENT BY USING, REPRODUCING OR COPY THE SAME WHOLLY OR IN PART WITHOUT WRITTEN PERMISSION FROM THE DESIGNER WILL RESULT IN LEGAL PROCEEDINGS